

Cheakamus Community Forest Climate Resilience Planning



Climate Resilience Planning - Forestry

Climate resilience planning is a decision to be *proactive about climate change*

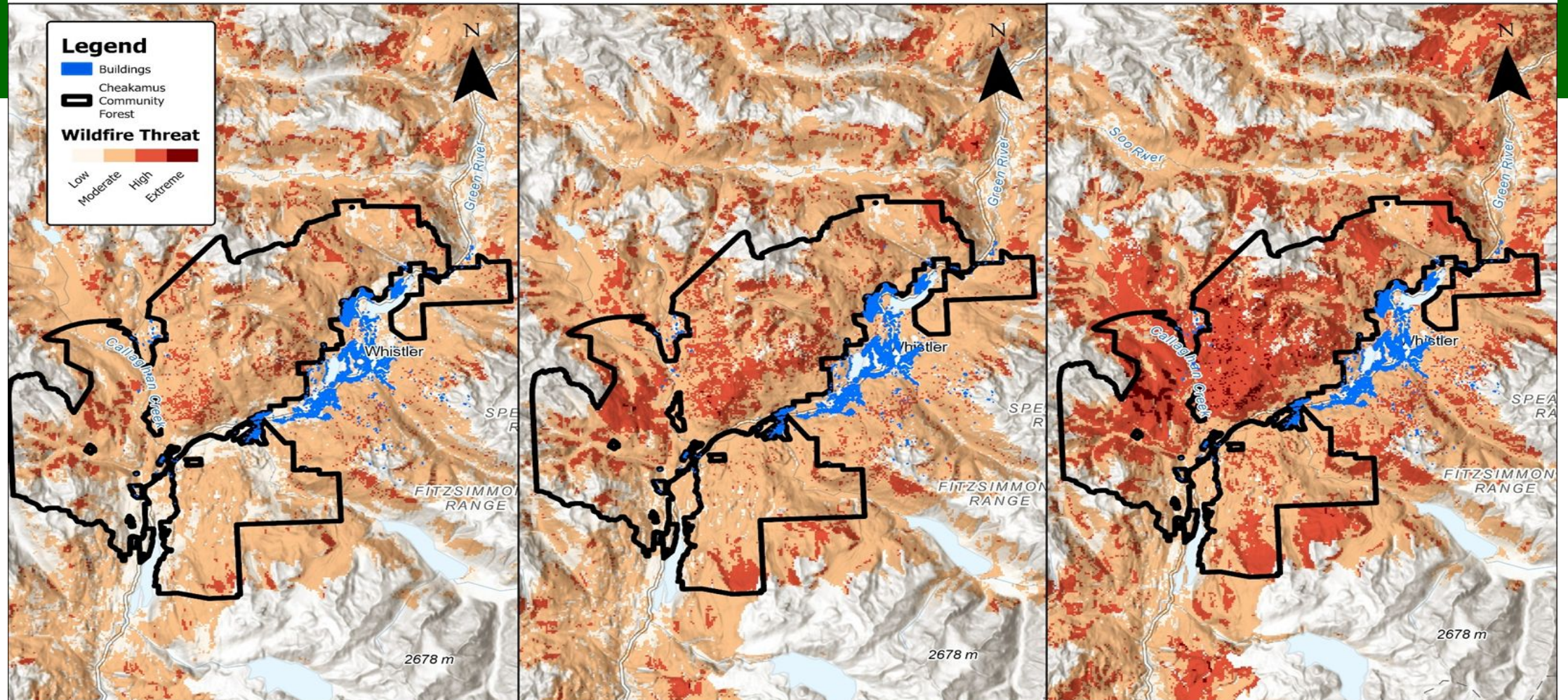
- In the case of the Cheakamus Community Forest, adapting the existing sustainable forest management framework into one that addresses local climate change and its impacts.
- This provides forest managers a greater ability to *respond* to climate change rather than to *react*.

Top Ranked Climatic Impacts to Whistler's Forests

- #1: Increases in wildfire activity;
- #2: Forest stress and tree mortality; and
- #3: Forest health (insects and diseases).

UNCERTAINTY

Predicted Wildfire Threat under Different Climate Scenarios over 2041-2060 for the Cheakamus Community Forest (CCF) and Whistler Community



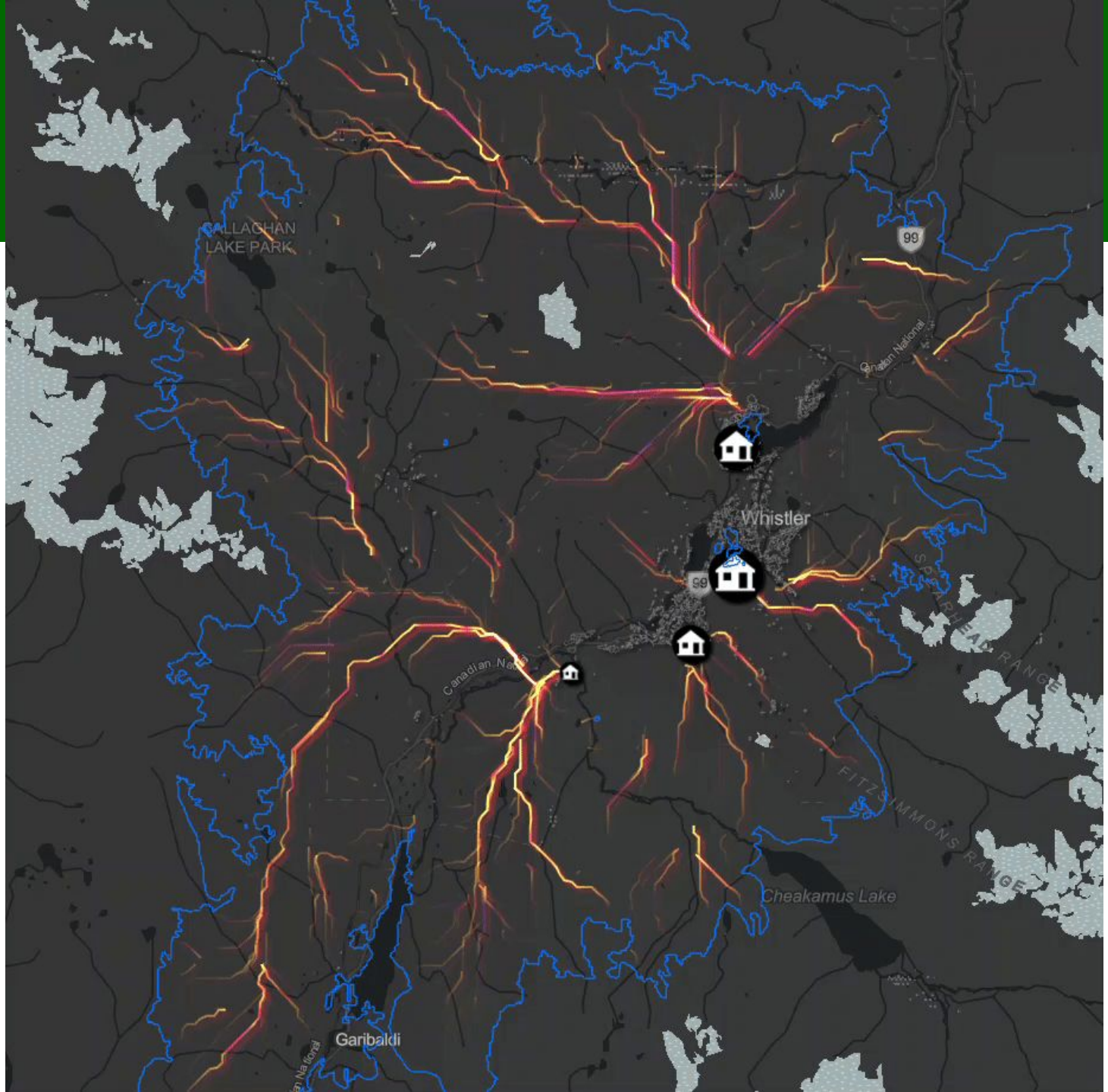
Observed/Current Climate

Modeled Climate: SSP1-2.6

Modeled Climate: SSP3-7.0

0 2.5 5 10 Kilometers

Wildfire threat was generated from thousands of iterations or fire seasons with the Monte-Carlo based simulation model BurnP3+. Threat aggregates burn probability, extreme wildfire rate of spread and extreme fire intensity to produce standardized scores. Threat was calculated under different climate scenarios using modeled datasets to predict the change in fire environment but ignitions are static and thus threat can be compared across scenarios. Modeled scenarios are for 2041-2060.



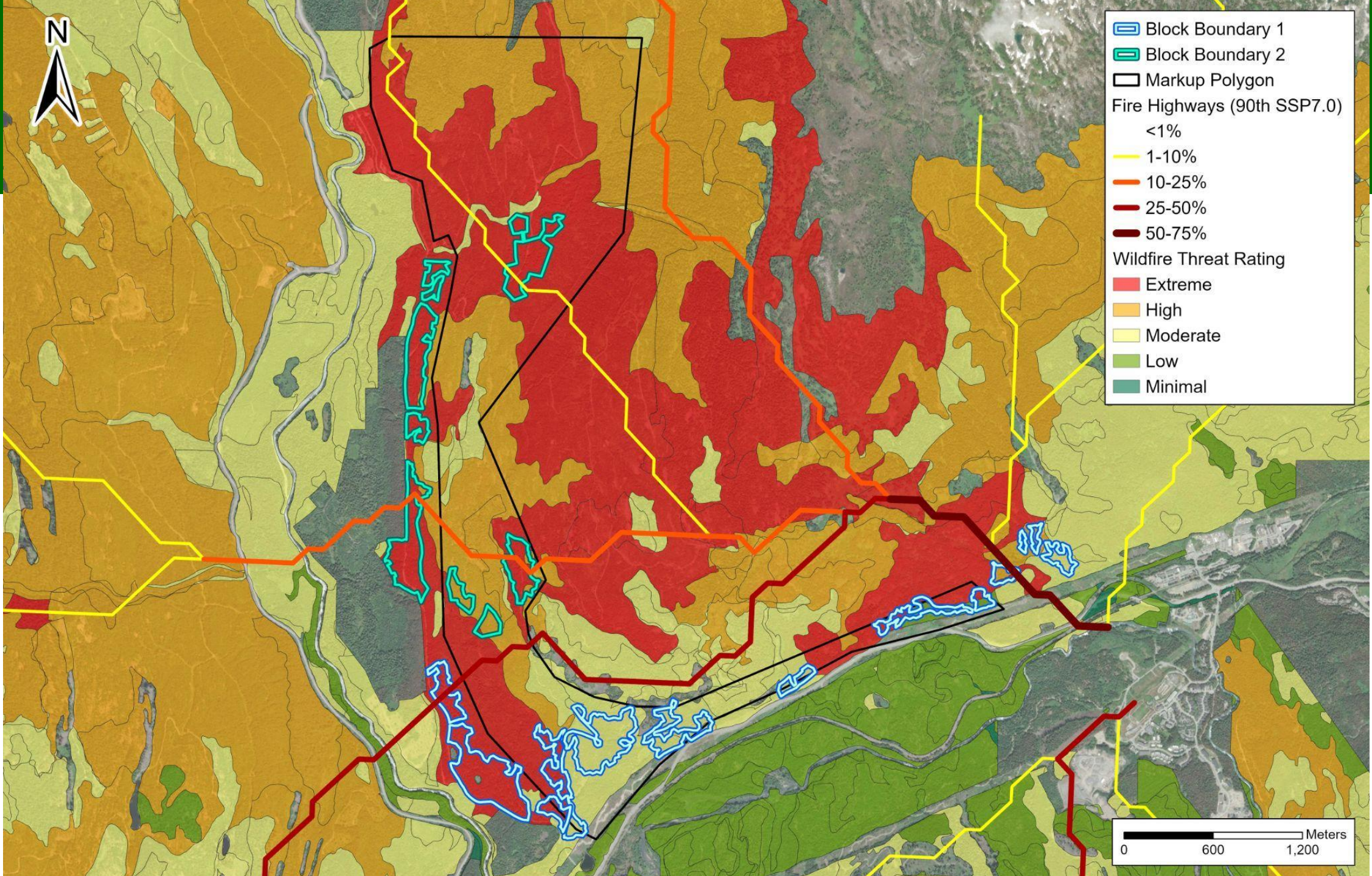
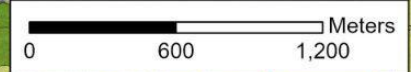
Block Boundary 1
Block Boundary 2
Markup Polygon

Fire Highways (90th SSP7.0)

- <1%
- 1-10%
- 10-25%
- 25-50%
- 50-75%

Wildfire Threat Rating

- Extreme
- High
- Moderate
- Low
- Minimal



Thank you



Thank you to our Sponsors



Municipal Finance
Authority of BC



Pacific Institute
for Climate Solutions



Wawanesa